

TECHNICAL DATA SHEET LED NGP

LED-NGP-11 X-RAY FILM VIEWER



***Optional:**
table top stand for additional fee

HOW DOES THE X-RAY FILM VIEWER WORK?

LED-NGP X-ray film viewers are medical devices designed for the analysis of medical images on X-ray films, which is one of the basic methods of diagnosing human diseases. X-ray film viewers manufactured in LED technology have extremely efficient parameters, such as the value of luminance intensity, uniformity of screen luminance, low operating cost- long lifetime, and low energy consumption. The devices do not come into contact with patients as they are devices supporting the process of analyzing X-rays by a doctor. The products are made in the 1st class of protection against electric shock. They can be used in operating theaters, doctor's offices, X-ray laboratories, etc.

BASIC DATA:

| | |
|-------------------------------|---|
| Mounting type | wall- mounted * |
| Casing material | powder-coated steel sheet |
| Viewer screen material | PMMA |
| Switch on/off | built-in x-ray film viewer body (Fig. 1 point 2) |
| Automatic clip for X-ray film | yes |
| Ambient temperature | +10°C to +40°C |
| Relative humidity | 30% to 70% |
| Atmospheric pressure | 700 hPa to 1060 hPa |
| Declaration of conformity | yes |
| User's manual English version | yes |



„Knob” for a smooth luminance adjustment with ON/OFF screen backlight

TECHNICAL DATA SHEET

LED NGP

LED-NGP-11

X-RAY FILM VIEWER

TECHNICAL DATA:

| | |
|--|---|
| Supply voltage | 90-260 V, 50-60 Hz |
| Power consumption | 65 W |
| Luminance | 600-6000 cd/m ² +/- 15 % (19 000 lux) |
| Light uniformity | ≥95 % |
| Step-less luminance adjustment (each frame separately) | 10 - 100 % |
| Colour temperature of the light of the lamps | > 6500 °K |
| Lifetime span | 50 000 working hours (average 25 years) |
| Absolutely no light flickering | yes |
| Screen dimensions (L x H) | 36 x 43 cm |
| Overall dimensions (L x W x H) | 430 x 35 (+15 knob) x 520 mm |
| Total mass | 4.5 kg |
| Class of protection against electric shock | I |
| Ingress Protection Code | IP 20 |
| Class for the medical environment | B - home |
| Group according to PN-EN 55011 Clause 5 | 1 |
| Power cord length | 2.5 m, ended with the socket plug |

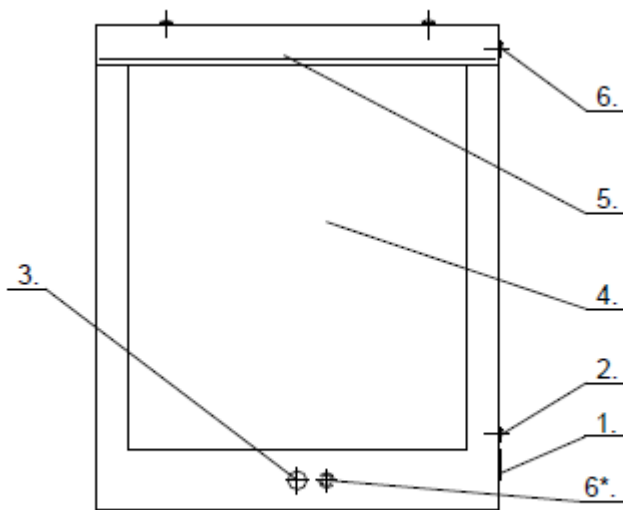


Fig.1. X – Ray film viewer LED-NGP-11

1. – connection unit with fuses
2. – main switch
3. – luminance adjustment knob with a switch off/ on
4. – screen
5. – film holder
6. – switch off the "glare"
- 6* – for LED-NGP 31 and LED-NGP 41 X-ray viewers switch off the "glare" is near the luminance adjustment knob on the front panel