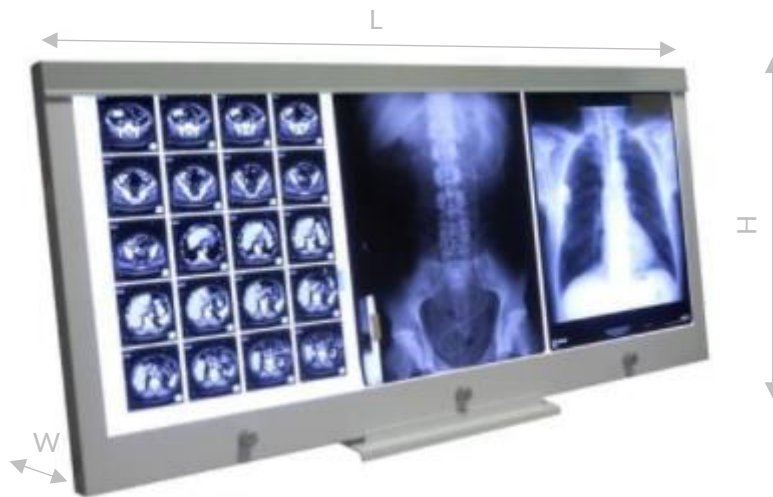


TECHNICAL DATA SHEET  
**LED NGP**



**LED NGP 31**  
 X-RAY FILM VIEWER

**HOW DOES THE X-RAY FILM VIEWER WORK?**

LED-NGP X-ray film viewers are medical devices designed for the analysis of medical images on X-ray films, which is one of the basic methods of diagnosing human diseases. X-ray film viewers manufactured in LED technology have extremely efficient parameters, such as: value of luminance intensity, uniformity of screen luminance, low operating cost- long lifetime, low energy consumption. The devices do not come into contact with patients as they are devices supporting the process of analyzing X-rays by a doctor. The products are made in the 1st class of protection against electric shock. They can be used in operating theaters, doctor's offices, X-ray laboratories, etc.

**BASIC DATA:**

Mounting type	table top stand / wall- mounted
Casing material	powder-coated steel sheet
Viewer screen material	PMMA
Switch on/off	built in x-ray film viewer body (Fig. 1 point 2)
Automatic clip for X-ray film	yes
Ambient temperature	+10°C to +40°C
Relative humidity	30% to 70%
Atmospheric pressure	700 hPa to 1060 hPa
Declaration of conformity	yes
User's manual English version	yes



„Knob” for a smooth luminance adjustment with ON/OFF screen backlight

## TECHNICAL DATA SHEET

# LED NGP

### LED NGP 31

#### X-RAY FILM VIEWER

#### TECHNICAL DATA:

Supply voltage	90-260 V, 50-60 Hz
Power consumption	180 W
Luminance	600-6000 cd/m <sup>2</sup> +/- 15 % (19 000 lux)
Light uniformity	≥95 %
Step-less luminance adjustment (each frame separately)	10 - 100 %
Colour temperature of the lamps light	> 6500 °K
Life-time span	50 000 working hours (average 25 years)
Absolutely no light flickering	yes
Screen dimensions (L x H)	108 x 43 cm
Overall dimensions (L x W x H)	1160 x 35 (+15 knob) x 520 mm
Total mass	12,0 kg
Anti-shock protection class	I
Ingress Protection Code	IP 20
Class for the medical environment	B - home
Group according to PN-EN 55011 Clause 5	1
Power cord length	2,5 m, ended with the socket plug

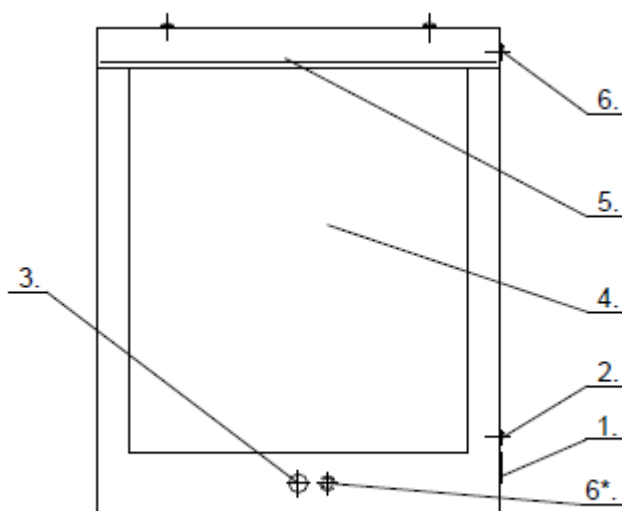


Fig.1. X – Ray film viewer LED-NGP-11

1. – connection unit with fuses
2. – main switch
3. – luminance adjustment knob with a switch off/ on
4. – screen
5. – film holder
6. – switch off the "glare"
- 6\*. – for LED-NGP 31 and LED-NGP 41 X-ray viewers switch off the "glare" is near the luminance adjustment knob on the front panel